



**ENROLL TODAY!!**

**LIMITED SPACE!**

## COMMUNITY HEALTH WORKER (CHW) CERTIFICATION TRAINING PROGRAM

Southwest Border AHEC, Community Care Training Center is currently enrolling individuals in a 160-hour Community Health Worker Certification course. The course will be taught in English. Upon completion students will be able to obtain a State of Texas Certification as a Community Health Worker.

### WHAT IS A COMMUNITY HEALTH WORKER?

A Community Health Worker (CHW) is a trusted member of the community, and a valuable part of a healthcare or social services team. Also known as outreach workers, navigators or promotores de salud, CHWs provide health, education and care coordination. They help others take action and promote healthy communities.

### TRAINING DATES:

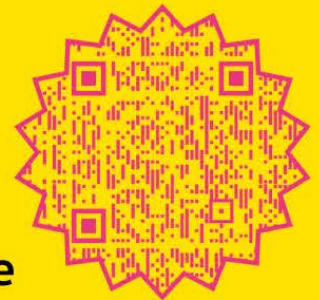
July 8, 2024 - August 26, 2024

5:30-7:30pm

Virtual via ZOOM

### REGISTER HERE:

- Go to [www.swb-ahec.org](http://www.swb-ahec.org)
- Find "Programs and Services"
- Click on "CHW Certification Training"
- Find and click "Register Here" or scan QR Code



### MANDATORY ORIENTATION:

Monday, July 1, 2024

5:30-6:30PM

Via zoom

### TRAINING COST:

SCHOLARSHIPS AVAILABLE TO RESIDENTS FROM THE FOLLOWING COUNTIES:  
MAVERICK, VAL VERDE, ZAVALA, KINNEY,  
UVALDE & REAL

For more information contact us at:  
[vegab@uthscsa.edu](mailto:vegab@uthscsa.edu)  
830.758.1111  
[www.swb-ahec.org](http://www.swb-ahec.org)

The course is approved by the Texas Department of State Health Services through the South Coastal AHEC, CHW Training Site #47 TXDSHS CHW to provide Community Health Worker/Promotora training